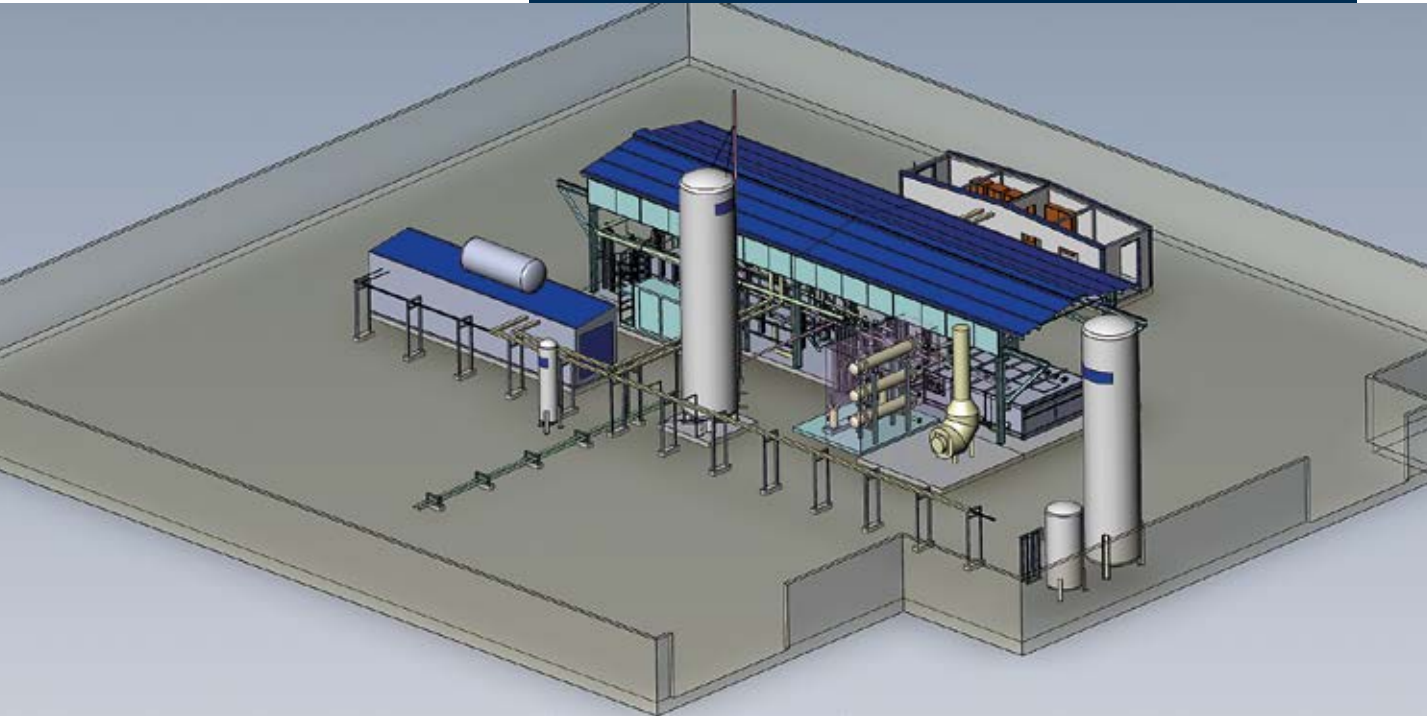


# VSL facilitates reliable LNG measurements



VSL, THE DUTCH METROLOGY INSTITUTE, IS CURRENTLY REALIZING A FIRST-OF-ITS-KIND LNG MIDSCALE TEST FACILITY IN THE ROTTERDAM PORT AND INDUSTRIAL AREA.

The test facility will provide reliable calibration and certification of LNG meters – mass flow meters as well as volume flow meters. Initially, it will be able to calibrate flow meters with a capacity up to 200 m<sup>3</sup> per hour. In the future this can be expanded up to 400 m<sup>3</sup> per hour or more. The facility will also provide certification of LNG composition measurements.

#### **Private company with public task**

Reliable measurements play an important role in defining standards and regulations regarding LNG in commercial transactions and taxation. They create accountability between LNG suppliers and their clients (such as gas stations and drivers) and they are a prerequisite for fair calculations of excise duties. VSL aims to promote the development of the LNG market, which is behind on the market for gasoline in

terms of standards and regulations. As a private company with a public task, VSL has been charged with developing and maintaining measurement standards in the Netherlands.

#### **Successful trials**

In the realization of the LNG midscale test facility, VSL is supported by Tebodin with project management, design document reviews, safety and design reviews, development of the plot layout under Dutch standards and regulations, and design and tendering of the civil works. Construction of the facility follows on successful trials with a much smaller pilot facility. The LNG midscale test facility will be suitable for calibrations on a commercial basis and is scheduled for start-up at the beginning of 2017. ■