

New plant for automated addition

THE NEW PREMIXES AND MINERALS MANUFACTURING COMPLEX OF THE FEED PRODUCER ABZ DIERVOERDING IN EINDHOVEN IS INCREASINGLY TAKING SHAPE. BILFINGER TEBODIN DESIGNED THE PLANS AND SUPERVISES THE CONSTRUCTION OF THIS COMPLEX ON BEHALF OF THE CLIENT.



The plant of ABZ Diervoeding in Eindhoven, located next to the Beatrix Canal, already produces pig and poultry feed for customers in the southern Netherlands. The location of the plant and the potential for further growth in sales of animal feed are important drivers for the investments taking place there. Work is ongoing on the finishing of a completely new premixes and minerals manufacturing complex. This building work is part of a long-term plan aimed at achieving a maximum production capacity of 300,000 tonnes of feed per year.

Design

The feed plant was built in the early 1980s with an annual capacity of 100,000 tonnes of compound feed. More than 200,000 tonnes of feed are now produced annually. 'We have largely achieved this through optimisation. Further production growth required major interventions,' says ABZ director Marcel Roordink. 'Five years ago, we drew up a ten-year plan. As with our other renovation and expansion projects, we again turned to Bilfinger Tebodin to draw up and implement the plans. Our long-standing relationship with Bilfinger Tebodin and their knowledge and commitment bring many benefits.'

Premixes and minerals

'The capacity of the grinding/mixing line is currently not used optimally, as a lot of time is lost because components have to be added manually,' says project manager Erik Kuiper. 'To make room for the automated addition of minerals and premixes, we relocated the liquids facility. The premixes and minerals manufacturing complex is being built at the vacant site', explains the project manager. The construction of this complex is progressing steadily.



Erik Kuiper

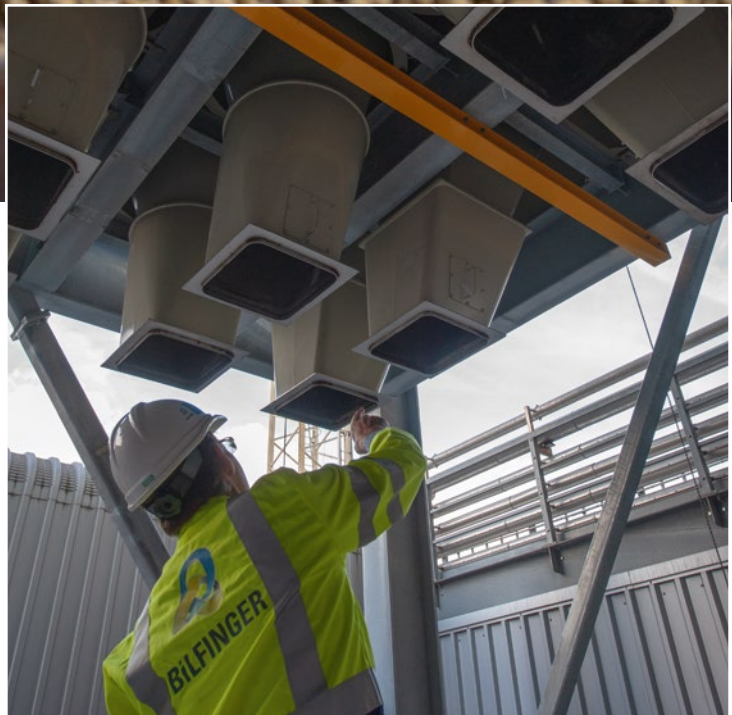
of minerals and premixes



On the north side of the plant, a silo complex containing 22 mineral cells (with a combined capacity of 465 m²) and 25 small component cells (155 m²) are being erected. The two silo blocks are built one above the other.

This ensures a free passage is maintained between the plant and the warehouse. At the same time, the raw materials section will be expanded with a further 20 silos with a combined capacity of 2,500 m². 'Despite the tight footprint, the complex as a whole remains spacious, without creating any restrictions for the future.'

The components are transported to the grinding/mixing line using a bulk blowing system. According to Roordink and Kuiper, the bulk blowing system was the only concession that had to be made in the building plans. All other wishes on the list of ABZ Diervoeding have been met with the current design.



Commissioning

The entire premixes and minerals manufacturing complex must be winter-proof within a few weeks. Kuiper expects that testing can begin starting from February. 'The aim is to hand over the project at the beginning of March.'